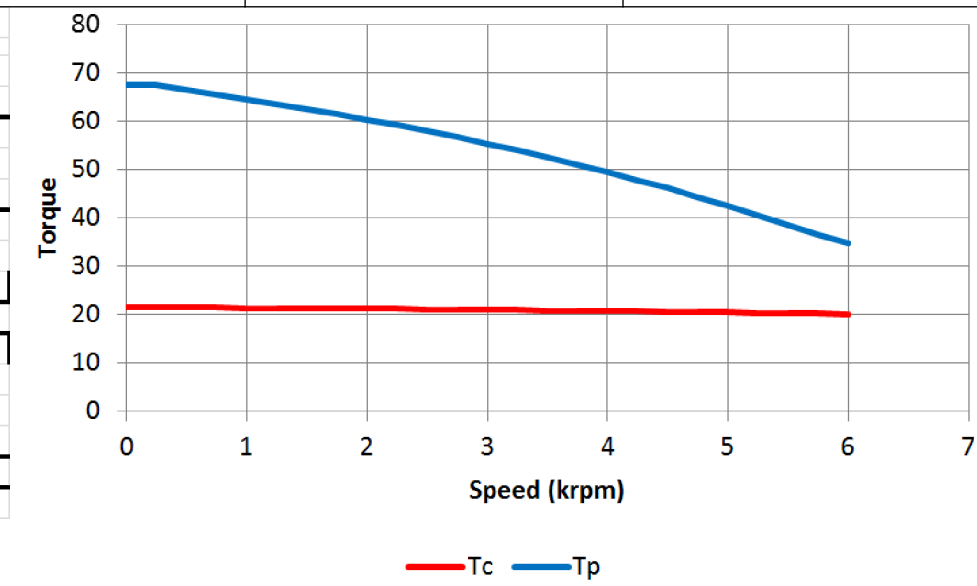
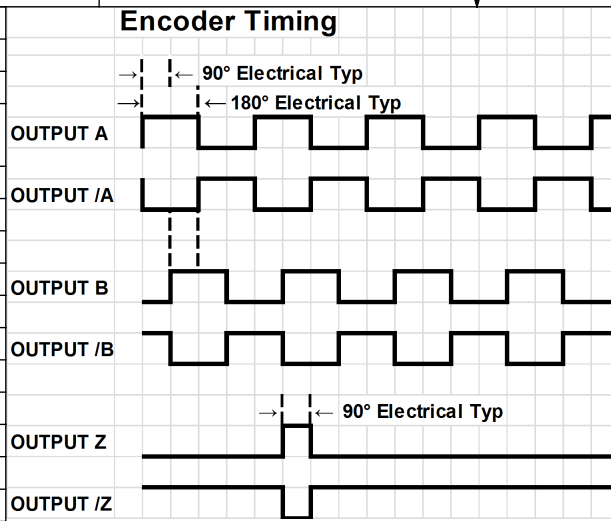
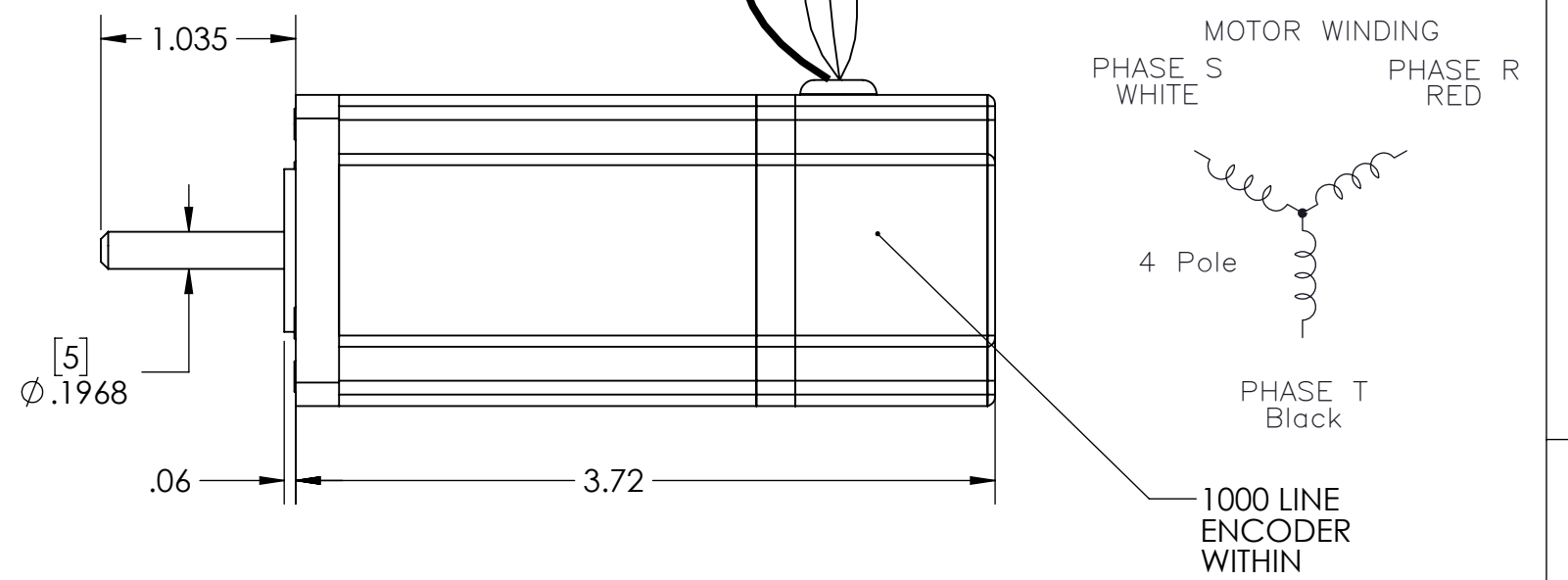
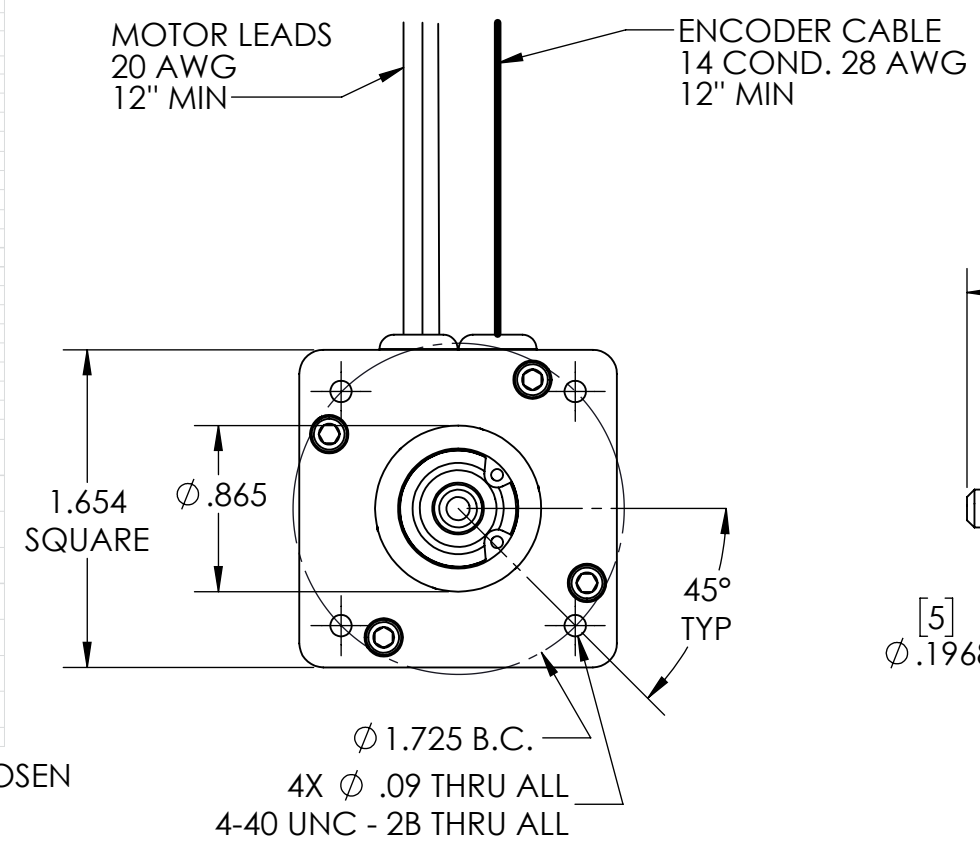
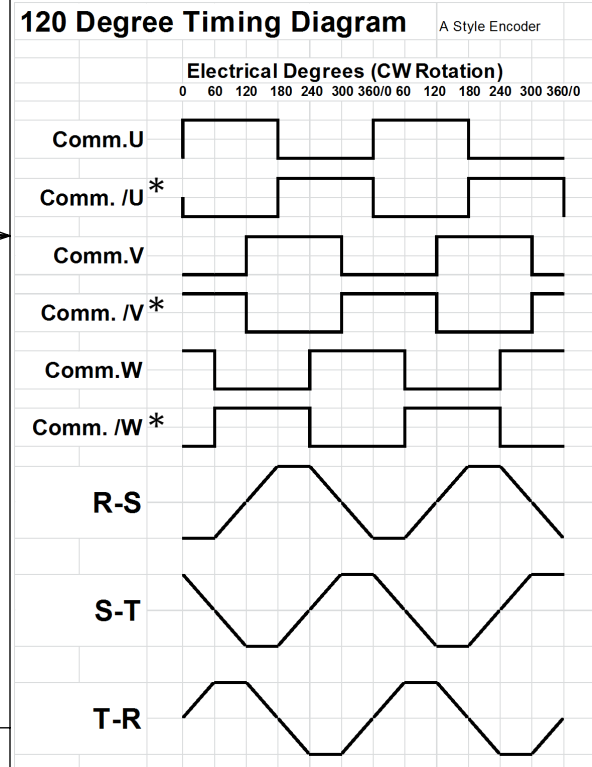


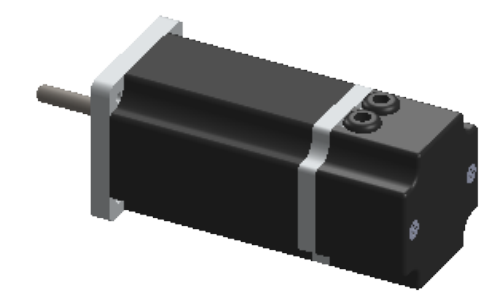
MTF0401K5.68				
Property	Symbol	Units	Value	Tolerance
Buss Voltage	Vb	Volts	170	MAX
Max Operating Speed	Sr	RPM	10000	MAX
Peak Torque	Tp	Oz-in	68.4	MAX
Continuous Torque	Tc	Oz-in	23.71	MAX
Torque Constant	Kt	Oz-in/A	11.55	±10%
Friction Torque	Tf	Oz-in	.48	Nom
Damping Torque	Kd	Oi/kRPM	.112	Nom
Peak Current	Ip	A MAX	5.92	MAX
Continuous Current	Ic	A MAX	2.05	MAX
Back EMF Constant	Ke	V/kRPM	9.00	±10%
Terminal Resistance	Rt	Ohms	12.66	±15%
Terminal Inductance	Lt	mH	14.46	±15%
Rotor Inertia	Jr	Oiss	.0003	Nom
Winding Temperature	deg C	deg C	135	MAX
Weight	Wt	Lbs		Nom



Enc/Comm Cable 28 AWG	
Function	Color
+5v	Red
Gnd	Black
U	Violet
/U*	Gray
V	Wht/Brn
/V*	Wht/Red
W	Wht/Orn
/W*	Wht/Yel
A	Brown
/A	White
B	Blue
/B	Green
Z	Orn
/Z	Yellow
shield	drain



* ONLY IF (A) STYLE ENCODER IS CHOSEN



REVISIONS			
DESCRIPTION	REV.	DATE	APPV'D
TO SOLIDWORKS	P1	1/12/2017	

PROPRIETARY AND CONFIDENTIAL

THE INFORMATION CONTAINED IN THIS DRAWING IS CONFIDENTIAL AND THE SOLE PROPERTY OF TRU TECH SPECIALTY MOTORS. ANY REPRODUCTION IN PART OR AS A WHOLE WITHOUT THE WRITTEN PERMISSION OF TRU TECH SPECIALTY MOTORS IS PROHIBITED.

UNLESS OTHERWISE SPECIFIED

DIMENSIONS: Inches [MILLIMETERS]

TOLERANCES: LINEAR X.XX: ±.01 [.25] LINEAR X.XXX: ±.005 [.13] ANGULAR: ± 1/2°

TruTech Specialty Motors

SIZE: **B** TITLE: HSF0403K9.0-E1000B

MATERIAL		DATE	SIGNATURE	PART NUMBER:	P1 REV
FINISH		DRAWN	1/11/2017	JAL	
PROJECT	FastTrack	CHK'D		53-0384	SCALE:1:1 SHEET 1 OF 1
STATUS	ACTIVE	APPV'D			